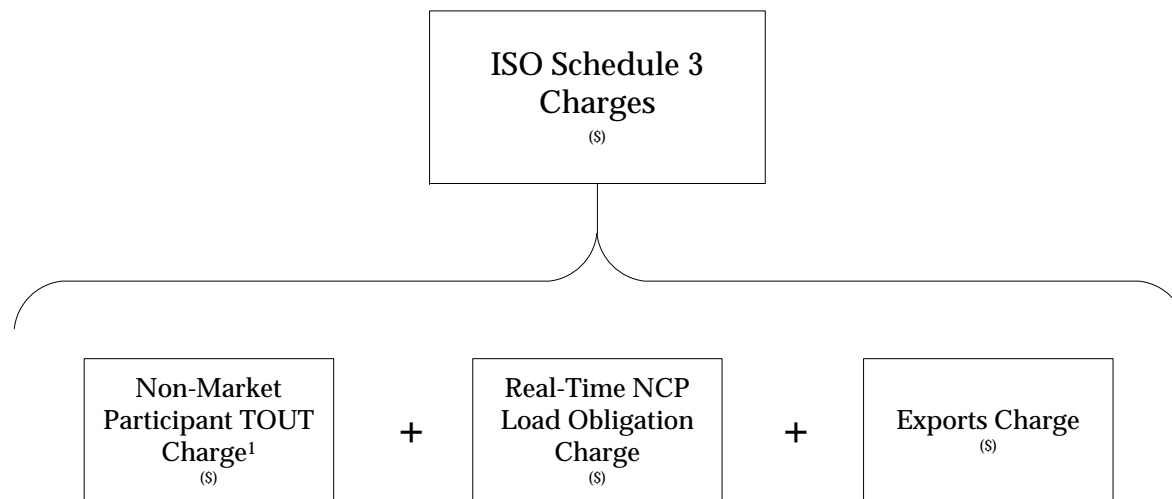


**Note:** The relevant Markets, Services and Transmission Tariff and the relevant Market Manuals, Operating Procedures and Planning Procedures shall govern.

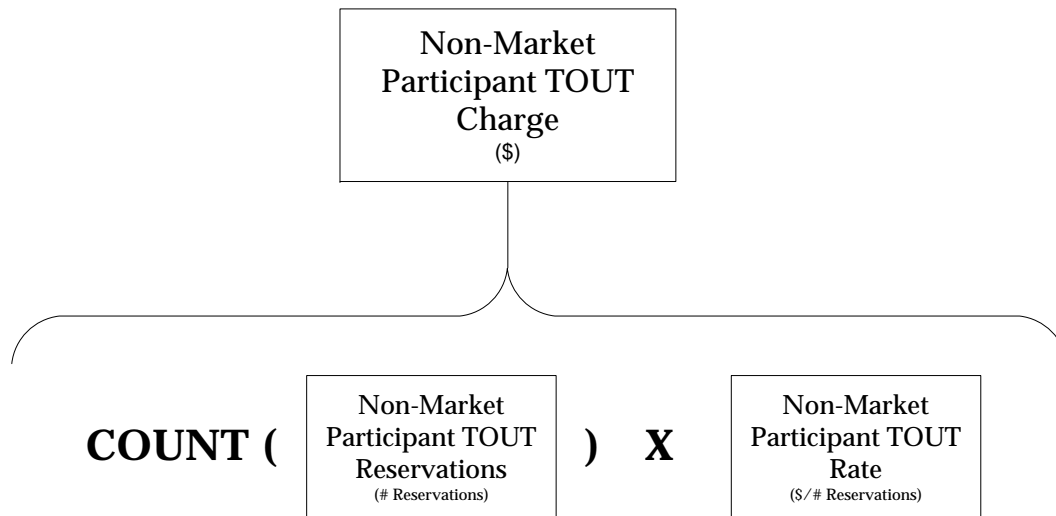
*Reference Guide*  
**Calculation Summary**

---





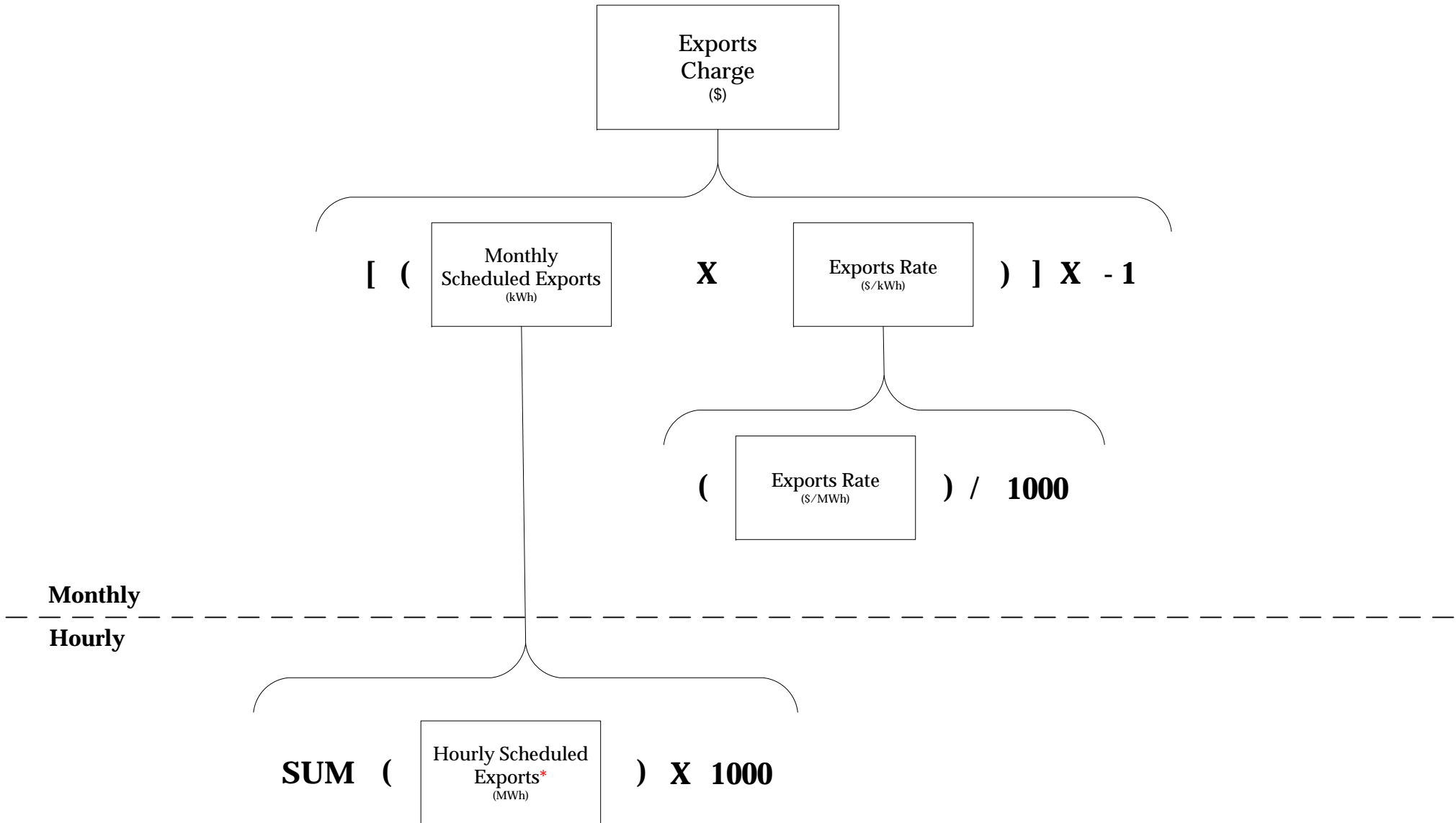
<sup>1</sup>Listed on MIS report TR\_SCH3P1 as: Through/Out Total



**Note:** The relevant Markets, Services and Transmission Tariff and the relevant Market Manuals, Operating Procedures and Planning Procedures shall govern.

## ***Real-Time NCP Load Obligation Charge Calculation Summary***

---



\*excludes Coordinated External Transactions